

2016 Annual Report

Bremer County Health Department

*Building a Healthier Bremer County*

# Bremer County Health Department

July 1, 2015– June 30, 2016



## Mission:

The Bremer County Health Department promotes, protects and preserves health through leadership, service, education, prevention practices and partnerships.

## Vision:

Building a Healthier Bremer County

# From the Administrator:

Dear Colleagues, Partners & Friends,

It gives me great pleasure to present the Bremer County Health Department's (BCHD) 2016 Annual Report and share some of the highlights from an exciting, momentous year.

Effective October 1, 2015, the Bremer County Board of Supervisors removed Home Health from Community Based Services and combined it with the public health contracted services previously held by the Waterloo Visiting Nurse Association. This established the new BCHD in order to better provide all services mandated in Iowa Administrative Code Chapter 80.

Taking on public health services was our greatest achievement this past year. Some of the new public health programs that the department worked to build during our 2016 fiscal year were disease outbreak investigation/reportable disease follow-up and immunizations. We also collaborated with Community Memorial Hospital in Sumner, Waverly Health Center, and Waverly Shell-Rock United Way to complete a community health needs assessment in order to develop a health improvement plan for the next five years. The BCHD also became part of the Cedar Valley Health Care Coalition (CVHCC), an organization that enhances and sustains Bremer County's ability to prepare, respond, and recover from short or long-term incidents that have a public health and medical impact.

Please continue to read and explore the many facets of home health and public health outlined in this annual report. For more information about our programs, please visit our website <http://www.co.bremer.ia.us/health-department/default.aspx> and follow us on Facebook. I would like to extend sincere appreciation to the Bremer County Board of Health, the Bremer County Board of Supervisors, the Bremer County Finance Director, the BCHD Advisory Board, the Iowa Department of Public Health, our community partners and the staff of the BCHD for all the guidance and support throughout the year in building our new department.

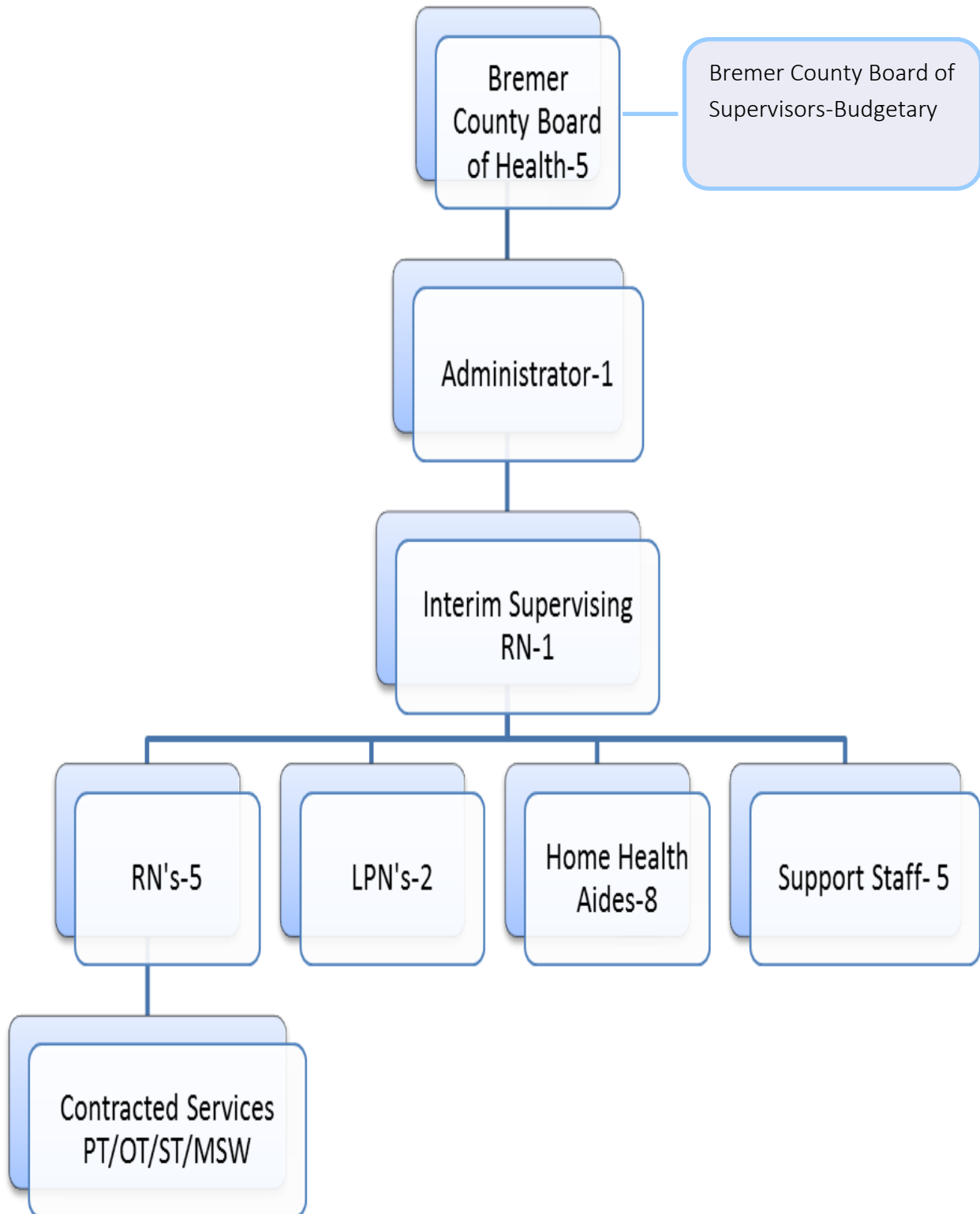
As we move forward into 2017, the BCHD will continue our efforts to prevent the spread of disease and promote the health of children and adults. We will continue to assess the needs of Bremer County and work in collaboration with other local partners to meet the identified needs. We will also be aggressively pursuing strategies and action plans to meet the changing health care and public health systems.

The Bremer County Board of Health and the Bremer County Health Department are proud to be able to serve you and work together in *Building a Healthier Bremer County*.

**Lindley R. Sharp, MPH**

Administrator, Bremer County Health Department

# Agency Overview



# Agency Overview

## Bremer County Board of Health

Sally Yungtum, RN- Chair  
Dewey Hildebrandt- Vice Chair  
Courtney Bochmann, DO- Medical Director  
Terry Dehmlow  
Matt Sexton, DVM  
Brenda Pothast-Secretary

## Bremer County Board of Supervisors

Dewey Hildebrandt  
Ken Kammeyer  
Tim Neil

## Bremer County Health Department Advisory Board

Cathryn Baumgartner, MSW-Waverly Health Center	Heather Leutzinger, MSW-Cedar Valley Hospice
Clay Dahlquist, DO- Waverly Health Center	Jennifer Nus, DPT, PT-Taylor Physical Therapy
Heather Johnson, MSW-Bartles Lutheran Retirement Home	Katie Schwartz, RN-BCHD
Holly Little, OT/COM-Northern Iowa Therapy	Lindley Sharp, MPH-BCHD

## Bremer County Health Department Staff

### Administrator

Lindley Sharp, MPH

### RN's

### Interim Supervising RN

Katie Schwartz

Amanda Brandt

Pat Colsch

Megan Miller

Marianne Nielsen

Nicole Wurzer

### LPN's

Mary Harms- Public Health Coordinator

Kelly Lantow- Home Care Aide Coordinator

Tami Thies- Biller/Coder

Chelsea Brase

Kristen Manson

### Home Health Aides

Judy Barker

Julie Copp

Hilliary Eickhoff

Stacey Kettwig

Amy Koch

Tiffanee Streich

Bonnie Wittenburg

Sarah Westendorf

# Funding Sources

## **Pay Sources:**

- County Funding
- Medicaid
- Medicaid Elderly Waiver
- Medicare
- Medicare HMOs
- Private Insurance
- Private Pay/Sliding Fee
- Veterans Administration

## **Grants:**

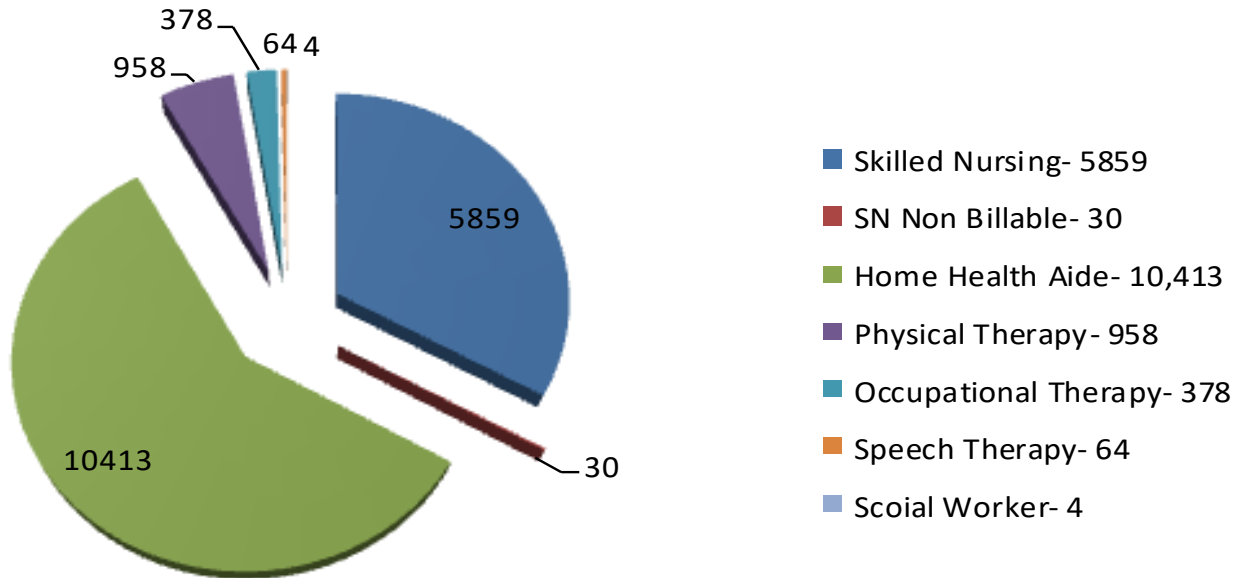
- Bremer County Community Foundation Grant
- Emergency Preparedness Grant
- Immunization Services Contract
- Local Public Health Services Grant
- 6-Year Public Health Emergency Preparedness Contract

## **Contracted Services:**

- Northern Iowa Therapy– Physical Therapy, Occupational Therapy and Speech Therapy
- Performance Rehab– Physical Therapy and Occupational Therapy
- Taylor Physical Therapy Associates– Physical Therapy and Occupational Therapy
- Waverly Health Center– Medical Social Worker and Speech Therapy

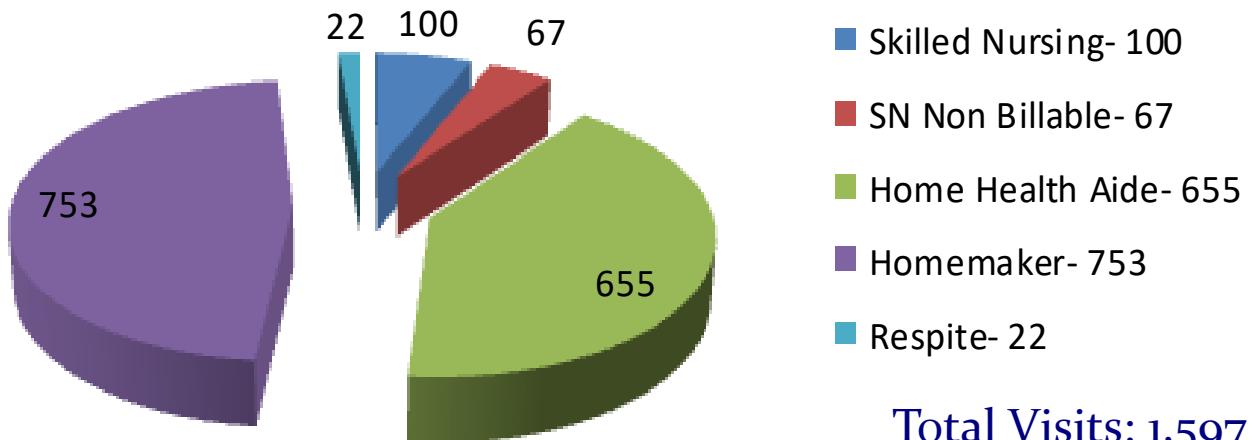
# Agency Statistics

## Home Health visits: Medicare, Medicaid, insurance, waivers, contracted, etc.



Total Visits: 17,706

## Public Health visits: State Grant and Private Pay



Total Visits: 1,597

# Agency Statistics

## 2016 Community Health Needs Assessment Snapshot

### Promote Healthy Living

- Priority #1– Heart Disease
- Priority #2– Healthy Lifestyles/Behaviors (overweight, obesity, high blood pressure, high cholesterol)
- Priority #3– Addictive Behaviors (excessive drinking and tobacco use)

### Prevent Injuries & Violence

- Priority #1– Unintentional Injuries

### Protect Against Environmental Hazards

- Priority #1– Radon Exposure
- Priority #2– Carbon Monoxide Poisoning

### Prevent Epidemics & the Spread of Disease

- Priority #1– HIV Screening
- Priority #2– Sexually Transmitted Diseases (STDs)
- Priority #3– Pneumonia or Influenza Hospitalization Rate

### Prepare for, Respond to, & Recover from Public Health Emergencies

- Priority #1– Individual Preparedness

### Strengthen the Health Infrastructure

- Priority #1– Access to Maternal and Child Health Programs
- Priority #2– Insufficient Social and Emotional Support

# Agency Statistics

## 2016 Health Improvement Plan

<b>Goal #1</b>	By 2021, increase Bremer County residents preparedness for natural and man-made disasters.	National Alignment	State Alignment		
		None Applicable	None Applicable		
<b>Objective 1-1</b>	By 2021, 65% of the Bremer County population will indicate they/their family are prepared for a natural or man-made disaster.	Baseline Year	Baseline Value	Target Year	Target Value
		2015	55%	2021	65%
<b>Strategy 1-1.1</b>	Through 2020, increase public knowledge of hazards and protective measures so individuals appropriately respond during disasters.	<u>Strategy Type</u> Counseling & Education <input type="button" value="v"/>			
	<u>Who's Responsible</u> Bremer County Health Department and Cedar Valley Healthcare Coalition	<u>Target Date</u> 12/31/2020			
<b>Strategy 1-1.2</b>	Through 2020, increase the number of families that have the necessary supplies to act during an emergency by promotion of preparedness supply lists and through education.	<u>Strategy Type</u> Counseling & Education <input type="button" value="v"/>			
	<u>Who's Responsible</u> Bremer County Health Department	<u>Target Date</u> 12/31/2020			
<b>Strategy 1-1.3</b>	Through 2020, increase the number of families that have practiced drills and activities that would take place during an emergency.	<u>Strategy Type</u> Counseling & Education <input type="button" value="v"/>			
	<u>Who's Responsible</u> Bremer County Health Department	<u>Target Date</u> 12/31/2020			

# Agency Statistics

## Communicable Disease Investigation and Follow-Up

Confirmed and Probable Cases	
Campylobacter	2
Cryptosporidium	1
Giardia	1
Mumps	8
Salmonella	2
Shigella	4
<b>Total</b>	<b>18</b>



## Immunization Program

Influenza	
Medicare	196
Private Pay	240
Bremer County Employees	51
<b>Total</b>	<b>487</b>



## Loan Closet Program

Loan Equipment Use	
Bath Bench	8
Bath Chair	17
Commode	2
Raised Toilet Seat	10
Reacher	2
Toilet Safety Rails	9
Transfer Bench	3
Walker	18
Wheelchair	7
Other	1
<b>Total</b>	<b>77</b>

All Bremer County Health Department programs

can be reached by phoning

(319) 352-0082

<http://www.co.bremer.ia.us/>



Find us on Facebook: Bremer County Health Department

**Bremer County Health Department**

403 3rd Street SE

Waverly, IA 50677